



A BETTER
DESIGN
A
BETTER
QUALITY



REVERSE OSMOSIS SYSTEM
USER'S MANUAL

PUREPRO
DRINKING WATER SYSTEM

© PUREPRO USA CORP., ILLINOIS, U.S.A.

Thank you very much for selecting Pure-Pro Water Corp.
In order to bring the best use of your system, please read the user's
manual carefully before installation and follow the regulations.

System overview



- EC105
- RO105
- LUX-105



- EC106M
- LUX-106M



- EC106R
- LUX-106R



- EC106A
- LUX-106A

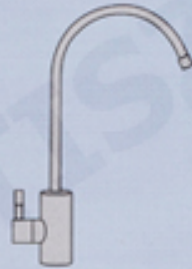


- EC106UV
- LUX-106UV

Components



Standard faucet



European ceramic faucet



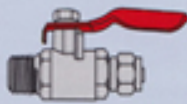
Water storage tank



Tubing



Housing wrench



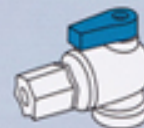
Deliver-valve



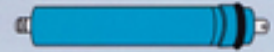
Water supply connector



Drain saddle



Tank ball shut-off valve

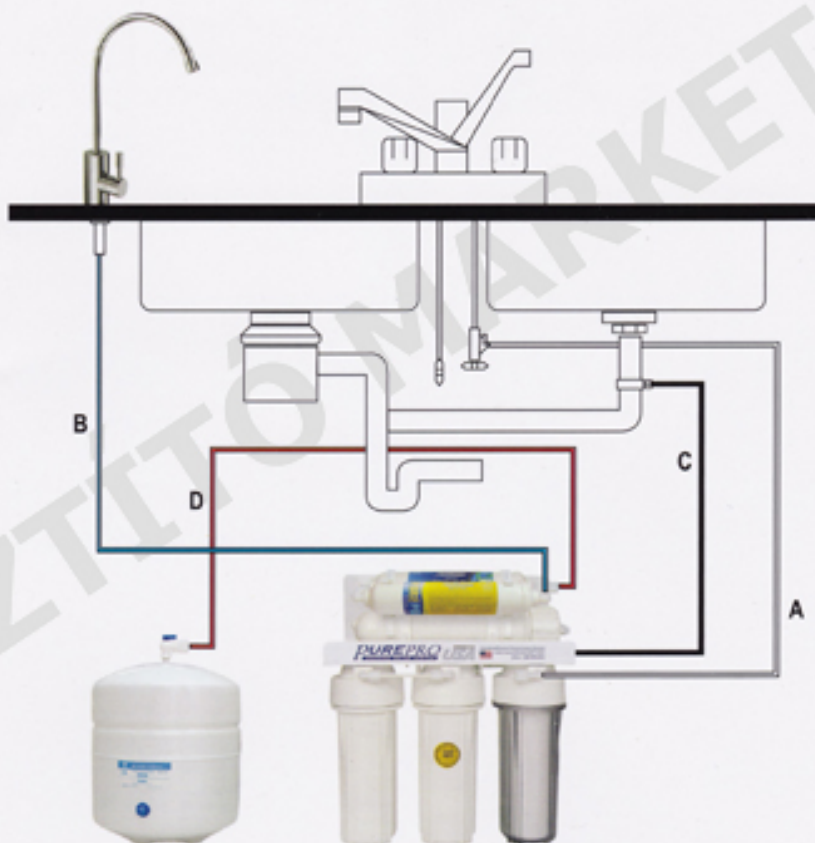


RO membrane

Tubing connection diagram

Connecting the color tubing

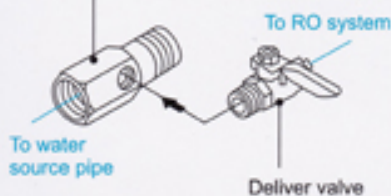
- A. Connect the WHITE tubing to the water supply connector.
- B. Connect the BLUE tubing to the sink top faucet.
- C. Connect the BLACK tubing to the drain saddle.
- D. Connect the RED tubing to the storage tank.



Installation diagram

Input water :

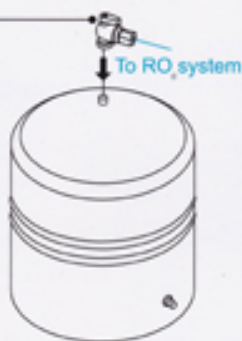
Water supply connector



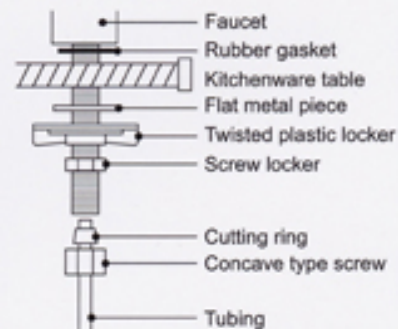
Install water tank :

Tank ball shut-off valve

Hand tighten plastic shut-off valve to tank. Then connect color tubing.

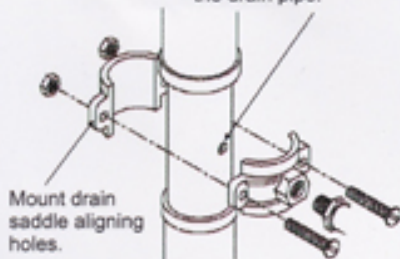


Install faucet :



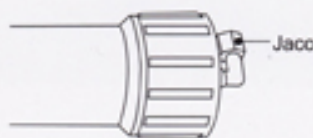
Install drain saddle :

Drill a 1/4" hole into the drain pipe.

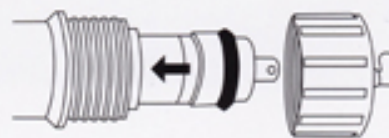


Install membrane :

- Loose the Jaco fitting anticlockwise.

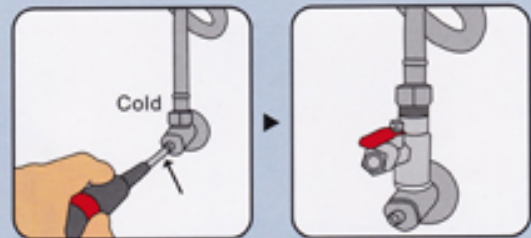


- Remove the membrane housing cap.
- Install the membrane by carefully pushing the spigot end into the socket at the far end of the housing until completely in.

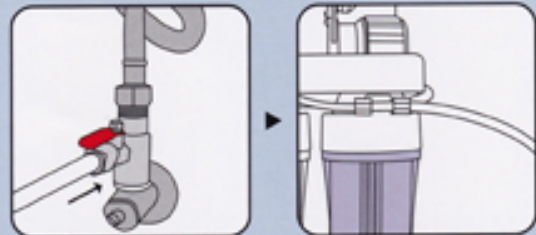


Installation diagram

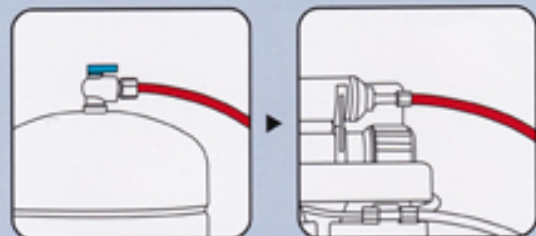
1. Turn off the water supply. Loosen the stainless steel pipe connector. Get feed water connector and connect it to the stainless steel pipe.



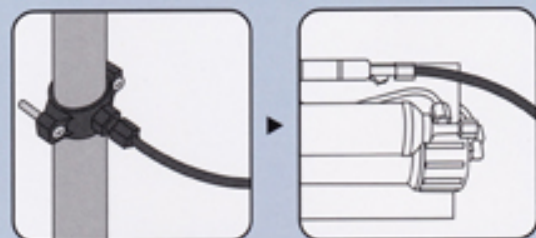
2. Get tubing white, connect it with deliver valve and the inlet water supply.



3. Take tubing red, connect it to the deliver valve and the inlet water to storage tank.



4. Take tubing black, connect it with the drain out.

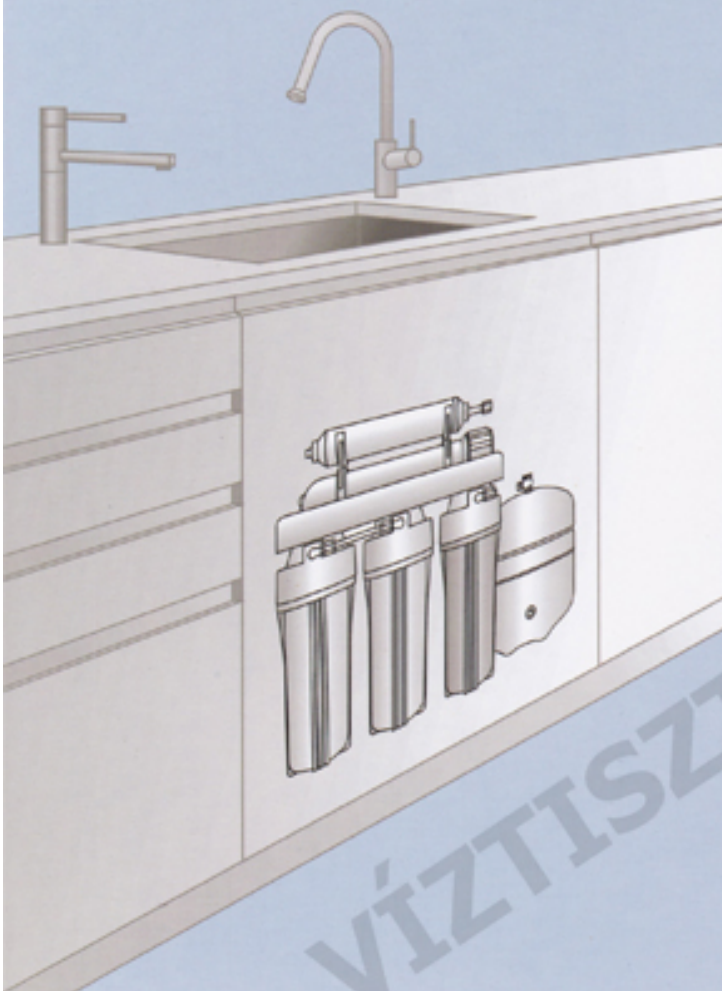


5. Use an electric drill and drill an approximately 1 cm hole through the kitchenware table. Take out the faucet and its components. Install the faucet and the rubber gasket to the kitchenware table. Take tubing blue. Wear the concave type screw on tubing blue and insert the tubing shroud as shown in the picture. Connect the tubing top with the faucet end. Then connect the tubing end to the last stage filter.



6. Make sure that you complete. If so, switch on water supply and plug in electricity.

PS. Do not use drink water from the first made water in the tank.



VÍZTISZTÍTÓ

Change filters

Change stage 1, 2, 3

- 1 Before filter replacement, please make sure water and electricity supply are cut off. Please turn off the tank ball valve, too.
- 2 To loosen the housings, please use the wrench and rotate close-wise.
- 3 To tighten the housing, please use the wrench and rotate anti-clockwise.



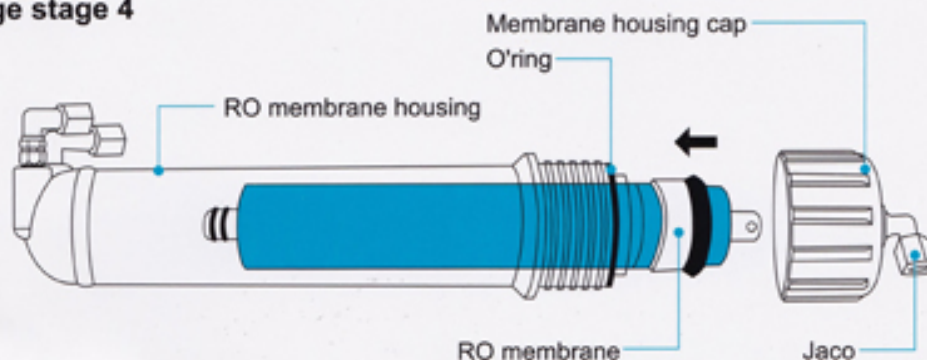
Change stage 5



- 1 Before filter replacement, please make sure water and electricity supply are cut off. Please turn off the tank ball valve, too.
- 2 Filters carry direction of water flow. Please make sure the correct flow direction during installation.
- 3 Loosen the jaco on both ends to replace the filter.
- 4 To avoid leakage, please tighten the jaco with Teflon tape before filter replacement.

Change membrane

Change stage 4



- 1 Before filter replacement, please make sure water and electricity supply are cut off. Please turn off the tank ball valve, too.
- 2 Loose the Jaco fitting anticlockwise.
- 3 Remove the membrane housing cap anticlockwise.
- 4 Remove the membrane by a pincer.
- 5 Install the membrane by carefully pushing the spigot end into the socket at the far end of the housing until completely in.
- 6 Be sure tighten with O-ring to prevent from leaking.

※ After changing filters, let water run for about 15 minutes to clear the filters.

Operation regulation

- A. With everything connected, turn on the water check for leaks.
- B. Make sure the storage tank shut-off valve is "OFF". Open the sink top faucet.
- C. Within a few minutes (up to 15) the water will start to run from the faucet slowly.
- D. Let the water run for at least 30 minutes. This flushes the carbon filters on first time use.
- E. After initial flushing, open the shut-off valve on the tank and close the sink top faucet.
- F. Tank will now full of water (usually 2 to 3 hours) after the tank has filled.
Open the sink top faucet and drain all water until the storage tank is empty and there is only a small flow from the sink top faucet. *** DO NOT USE FIRST TANK OF WATER.***
- G. Close the sink top faucet. The system is now ready for use.
- H. Change filters regularly every 6 to 12 months and have the membrane checked annually.

Caution

1. Do not use hot water (over 45°C)!
2. Do not freeze the machine!
3. Switch off electricity and water source if away for more than 5 days, and drain out pure water.

Warranty

Type of product			
Date of purchase			
Name		Tel	
Address			
★ If the supply cord is damaged, it must be replaced by a special cord or assembly available from the manufacturer or its service agent.			

Pure-Pro Reverse Osmosis (RO) Systems


Over ten years expertise in reverse osmosis drinking water systems, our unique design features make installation easier and operation more reliable, and our wide selection of colors and sizes allows you to solve virtually any RO application.



© PUREPRO USA CORP. ILLINOIS, U.S.A.

Pure-Pro Water Corporation

19636 S. 97th Ave Mokena, Illinois, U.S.A.
Tel: +1 708 479 4473 Fax: +1 708 479 4332

 www.purepro.net

