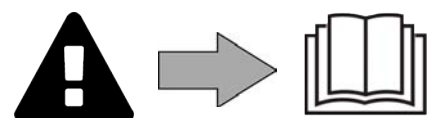


POLARIS W LINE

W 445 - W 445 T





More documents on:
www.polarispool.eu



⚠ WARNINGS

- Before handling the appliance, it is vital that you read this installation and user manual, as well as the "warnings and warranty" booklet delivered with the appliance. Failure to do so may result in material damage or serious or fatal injury and will void the warranty.
- Keep and pass on these documents for reference during the appliance's service life.
- The distribution or modification of this document in any way is prohibited, without prior authorisation from the manufacturer.
- The manufacturer is constantly developing its products to improve their quality. The information contained herein may therefore be modified without notice.

GENERAL WARNINGS

- Failure to respect the warnings may cause serious damage to the pool equipment or cause serious injury, even death.
- Only a person qualified in the technical fields concerned (electricity, hydraulics or refrigeration) is authorised to carry out maintenance or repair work on the appliance. The qualified technician working on the appliance must use/wear personal protective equipment (such as safety goggles and protective gloves, etc.) in order to reduce the risk of injury occurring when working on the appliance.  
- Before handling the appliance, check that it is switched off and isolated.
- The appliance is intended to be used for pools and spas for a specific purpose; it must not be used for any purpose other than that for which it was designed.
- This appliance is not intended for use by individuals (including children) with impaired physical, sensorial or mental abilities, or persons lacking in knowledge and experience, unless they receive supervision or prior instructions on using the appliance from a person responsible for their safety. Children must be supervised to ensure that they do not play with the appliance.
- This appliance can be used by children under 8 and adults with impaired physical, sensory or mental capabilities, or who lack experience and knowledge, if they are correctly supervised or have been instructed in how to use the appliance safely and understand the hazards involved. User cleaning and maintenance operations must not be carried out by children without supervision.
- The appliance must be installed according to the manufacturer's instructions and in compliance with local and national standards. The installer is responsible for installing the appliance and for compliance with national installation regulations. Under no circumstances may the manufacturer be held liable in the event of failure to comply with applicable local installation standards.
- For any work other than the simple user maintenance described in this manual, the product should be referred to a qualified professional.
- If the appliance suffers a malfunction, do not try to repair it yourself; instead contact a qualified technician.
- Refer to the warranty conditions for details of the permitted water balance values for operating the appliance.
- Deactivating, eliminating or by-passing any of the safety mechanisms integrated into the appliance shall automatically void the warranty, in addition to the use of spare parts manufactured by unauthorised third-party manufacturers.
- Do not spray insecticide or any other chemical (flammable or non-flammable) in the direction of the appliance, as this may damage the body and cause a fire.
- Do not touch the fan or moving parts and do not place objects or your fingers in the vicinity of the moving parts when the appliance is in operation. Moving parts can cause serious injury or even death.

WARNINGS ASSOCIATED WITH ELECTRICAL APPLIANCES

- The power supply to the appliance must be protected by a dedicated 30 mA Residual Current Device (RCD), complying with the standards and regulations in force in the country in which it is installed.
- Do not use any extension lead when connecting the appliance; connect the appliance directly to a suitable power supply.
- Before carrying out any operations, check that:
 - The required input voltage indicated on the appliance information plate corresponds to the mains voltage;
 - The mains supply is compatible with the appliance's electricity needs and is correctly grounded.
- In the event of abnormal operation or the release of odours from the appliance, turn it off immediately, unplug it from its power supply and contact a professional.
- Before servicing or performing maintenance on the appliance, check that it is powered off and completely disconnected from the power supply and that all other equipment or accessories connected to the appliance are also disconnected from the power circuit.
- Do not disconnect and reconnect the appliance to the power supply when in operation.
- Do not pull on the power cord to disconnect it from the power supply.
- If the power cord is damaged, it must be replaced by the manufacturer, an authorised representative or a repair facility only.
- Do not perform maintenance or servicing operations on the appliance with wet hands or if the appliance is wet.
- Before connecting the appliance to the power supply, check that the connection unit or socket to which the appliance will be connected is in good condition and shows no signs of damage or rust.
- In stormy weather, disconnect the appliance from the power supply to prevent it from suffering lightning damage.
- Do not immerse the appliance in water (with the exception of cleaners) or mud.

SPECIFIC FEATURES APPLICABLE TO "Pool cleaners"

- To avoid possible injury or damage to the cleaner, do not operate the cleaner out of the water.
- In order to prevent possible injury, bathing is prohibited when your cleaner is in the pool.
- Do not use the cleaner during shock chlorination.
- Do not leave the cleaner unattended for an extended period.

WARNING ON THE USE OF A CLEANER IN A POOL WITH A LINER:

- Before installing the cleaner, carefully inspect the pool lining. If the liner is damaged in some places, do not install the cleaner before having the liner repaired or replaced by a qualified professional. The manufacturer may not be held liable in any way for damage caused to the liner.
- The surface of certain patterned liners can wear away quickly: the patterns and/or colours can become deteriorated, faded or disappear on contact with certain objects. The cleaner manufacturer may not be held liable for wear to the liners or faded patterns, which are not covered by the limited warranty.

WARNING ON THE USE OF A CLEANER IN A STAINLESS STEEL POOL

- Some stainless steel pools may have very fragile surfaces. The surface of these pools might get damaged by the basic friction of debris against the surface, for example caused by the wheels, tracks or brushes of cleaners, including electrical pool cleaner. The wear or scratching of stainless steel pools are not the liability of the manufacturer of the pool cleaner and are not covered by the limited warranty.

CONTENTS



1 Information before using the appliance

5

1.1 | Package contents

5

1.2 | Technical specifications and parts list

6

1.3 | Operating principle

7

1.4 | Pool preparation

7



2 Use

8

2.1 | Immersing the cleaner

8

2.2 | Electricity supply connection

9

2.3 | Control box functions

10

2.4 | Starting the cleaning cycle

11

2.5 | Removing the cleaner from the water

13

2.6 | Good practices after each cleaning operation

14



3 Maintenance

15

3.1 | Cleaning the cleaner

15

3.2 | Cleaning the filter as soon as the appliance is out of the pool

15

3.3 | Cleaning the impeller

16

3.4 | Replacing the tracks

16

3.5 | Replacing the brushes

17



4 Troubleshooting

18

4.1 | Appliance behaviour

18

4.2 | User alerts

19

EN



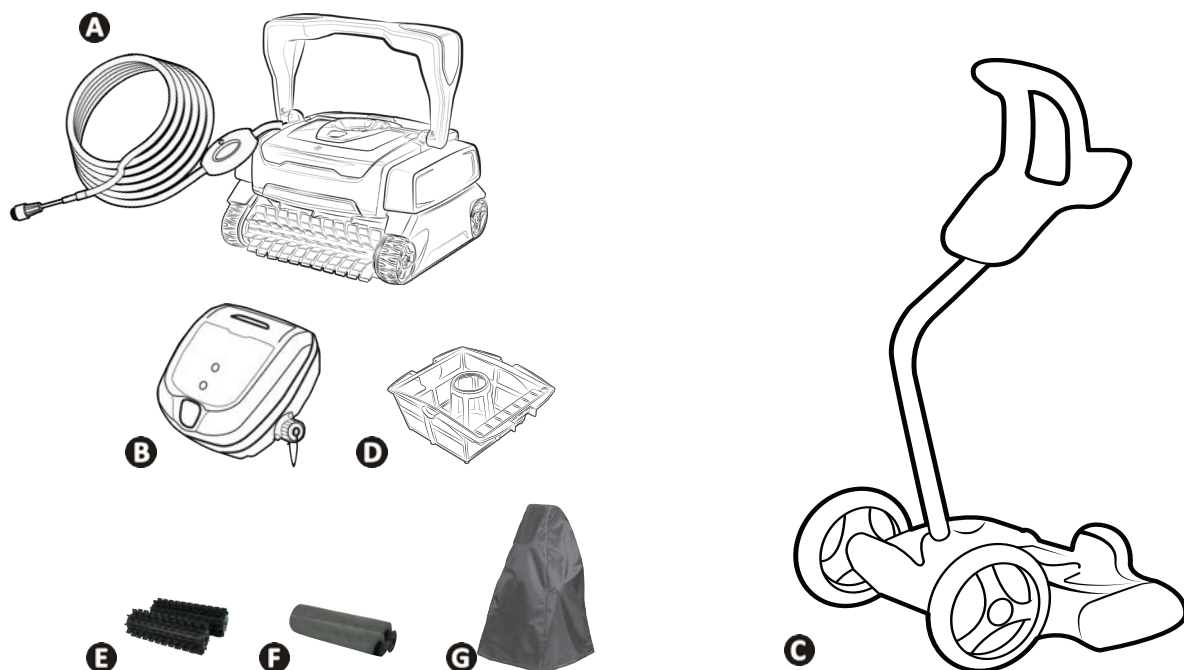
Tip: to make it easier to contact the retailer

Write down the retailer's contact details to help you find them more easily and fill in the "product" information on the back of the manual: the retailer will ask for this information.



1 Information before using the appliance

1.1 | Package contents



		W 445	W 445T
A	Cleaner + floating cable	✓	✓
B	Control box	✓	✓
C	Trolley kit	✓	✓
D	100µ fine debris filter	✓	✓
	200µ large debris filter	+	+
	60µ very fine debris filter	+	+
E	Standard blade brushes	✓	+
F	PVA brushes (polyester - tiled - enamel pools)	+	✓
G	Protective cover	+	+

✓: Included

+: Optional extra

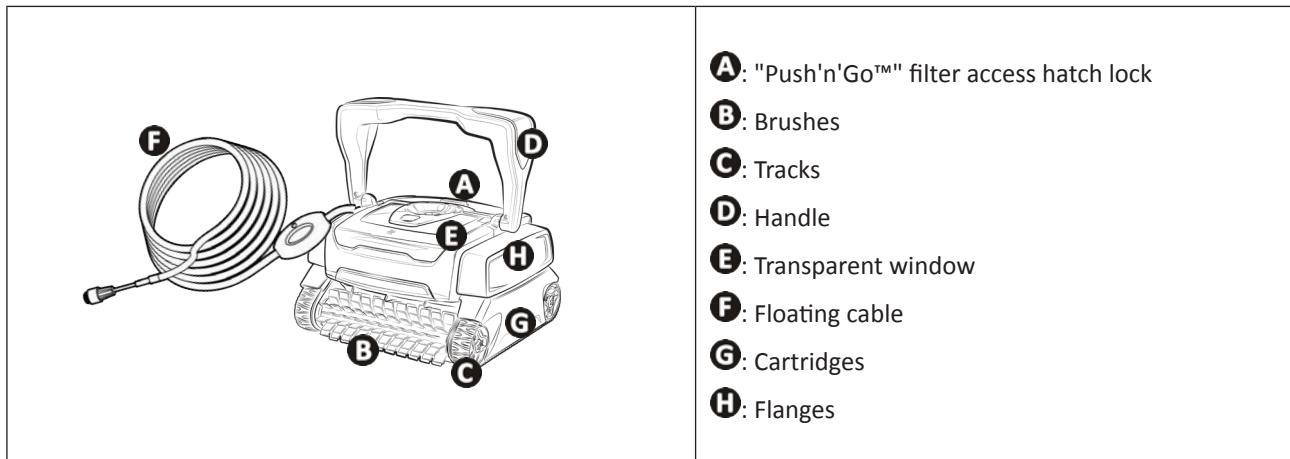
➤ 1.2 I Technical specifications and parts list

1.2.1 Technical specifications

	W 445 - W 445 T
Control box power supply	220-240 VAC, 50/60 Hz
Cleaner power supply	30 VDC
Maximum power input	150 W
Cable length	18 m
Cleaner weight	9 kg
Suction width	220 mm
Maximum operating depth	4 m
Power supply protection rating	IPX5
Cleaner protection rating	IPX8

EN

1.2.2 Parts list

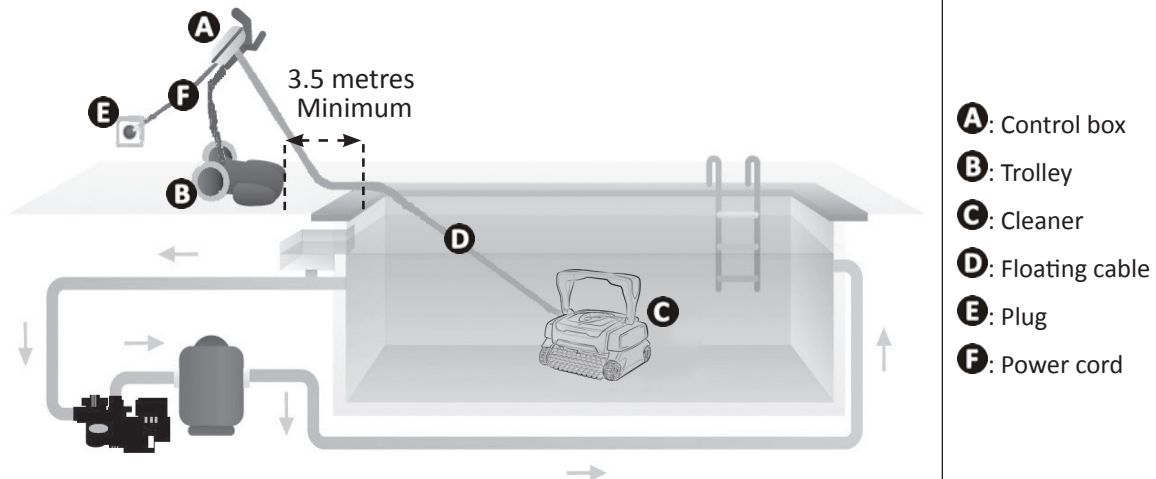


➤ 1.3 I Operating principle

The cleaner is separate from the filtration system and can function independently. It just simply needs to be connected to the mains power supply.

It finds the best route to move around and clean the areas of the pool for which it has been designed (depending on the model: floor, walls, waterline). Debris is sucked in and stored in the cleaner's filter.

The control box enables the cleaning operations to be started, selected and programmed (depending on the model).



➤ 1.4 I Pool preparation



- This product is intended to be used in pools which are permanently installed. Do not use it in pools which may be dismantled. A permanent pool is built into the ground or on the ground and cannot be easily dismantled and stored.

- The appliance must operate in pool water with the following properties:

Water temperature	Between 15°C and 35°C
pH	Between 6.8 and 7.6
Free chlorine	< 3 mg/l

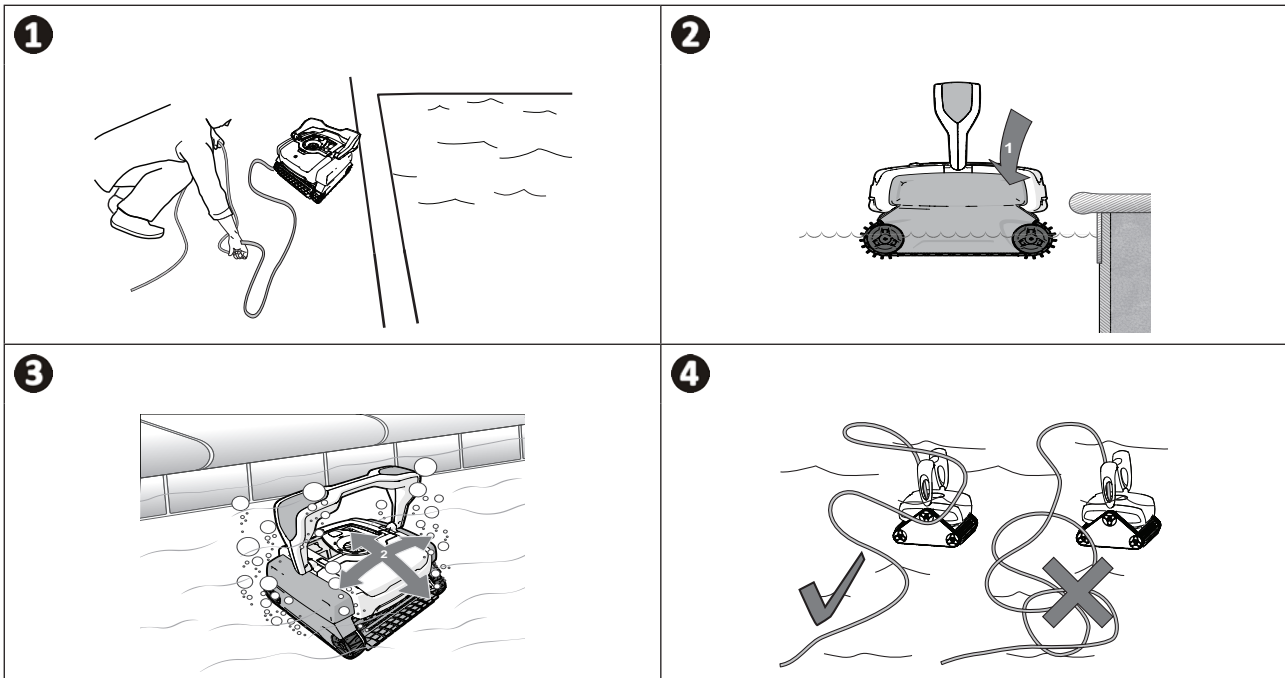
- When the pool is dirty, especially when commissioning, remove the largest debris using a net in order to optimise the appliance's performances.
- Remove any thermometers, toys and other objects that might damage the appliance.



2 Use

2.1 I Immersing the cleaner

- Roll out the full length of the cable alongside the pool to avoid the cable becoming tangled during immersion (see figure 1).
- Place the cleaner vertically into the water (see figure 2).
- Move it slightly in all directions so that the air contained in the cleaner escapes (see figure 3).
- It is essential that the appliance sinks on its own and settles on the pool floor. While it is immersed, the cleaner draws the length of cable it needs into the pool (see figure 4).



EN

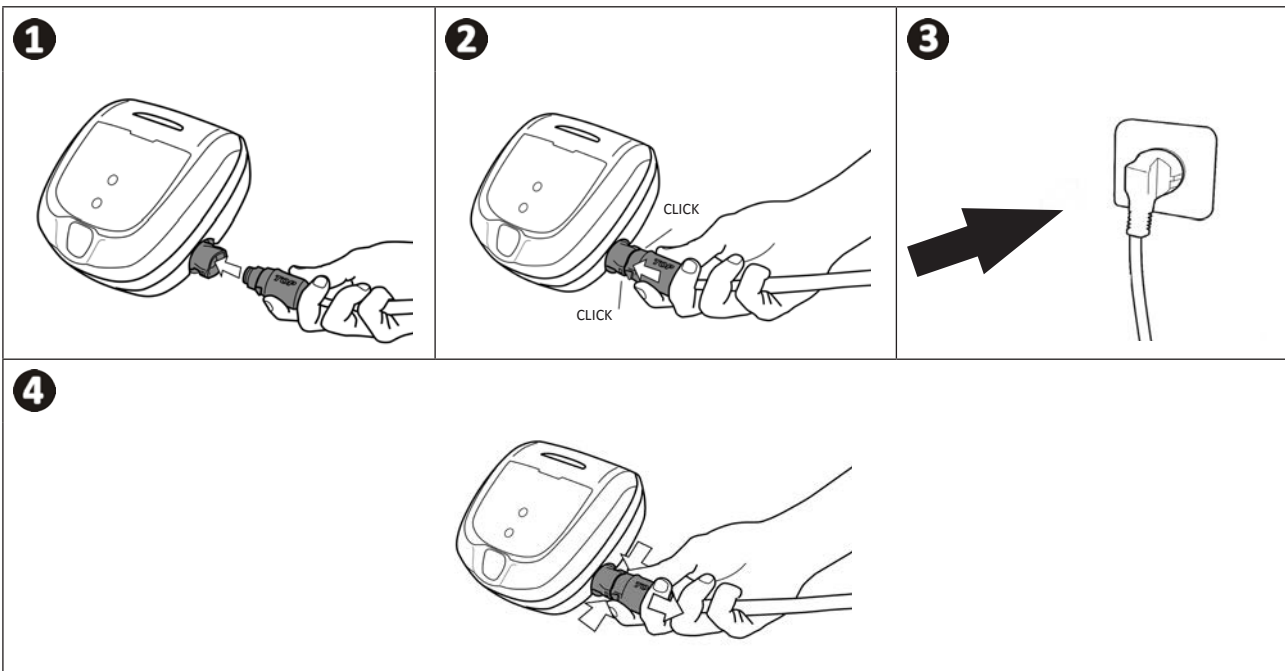
2.2 I Electricity supply connection

To prevent all risks of electrocution, fire or serious injury, please comply with the following instructions:



- Use of an electrical extension is prohibited when connecting the control box.
- Make sure that the socket can be easily accessed at all times and is protected from rain or splashes.
- The control box is splash-proof, but must not be immersed in the water or any other liquid. It must not be installed in a floodable area; keep it at least 3.5 metres away from the edge of the pool and avoid exposing it to direct sunlight.
- Place the control box near the socket.

- Connect the floating cable into the control box (see figure 1).
- Push the connector in until you hear 2 clicks (see figure 2). Make sure the connector is sufficiently pushed into place. If it is not, repeat the operation.
- Connect the power cord (see figure 3). Only connect the control box to a power outlet protected by a 30 mA maximum residual current device (**if in doubt contact a qualified technician**).
- To disconnect the floating cable from the control box, pinch the 2 clips at the end of the connector and pull at the same time (see figure 4).



Tip: positioning the box for better operation

Place the control box halfway along the length of the pool, in accordance with the safety conditions relating to the electrical connection.

2.3 I Control box functions



Example of a control panel
(functions may differ depending on the model)

Symbol	Description	W 445 - W 445 T
	Start/ Stop the appliance	✓
	"Control" indicator	✓
	Surface Control System = Surface inspection	✓
	"Clean filter" indicator	✓
	Surface to be cleaned Floor only	✓
	Floor + walls + waterline	✓
	Increase/Reduce the cleaning time	✓

✓: Available

2.4 I Starting the cleaning cycle



To prevent all risks of injury or equipment damage, comply with the following directives:

- Bathing is prohibited when the appliance is in the pool.
- Do not use the appliance during shock chlorination.
- Do not leave the appliance unattended for an extended period.
- Do not use the appliance if the roller shutter is closed.


- When the control box is powered up, the following symbols light up to indicate:
 - The action in progress
 - The cleaning cycle selected (depending on the model)
 - that maintenance is required
- The control box switches to standby after 10 minutes and the screen is switched off. Press any key to exit standby mode. Standby mode does not stop the appliance if it is in a cleaning cycle.

2.4.1 Selecting the cleaning cycle (depending on the model)

- A cleaning cycle is already configured by default: the symbols are lit.
- The cleaning cycle can be selected at any time, before the appliance starts or while it is operating. The new cycle will start immediately.
- The cleaner adapts its movement strategy depending on the choice in order to optimise coverage.

Surface to be cleaned

 Floor only

 Floor + walls + waterline

2.4.2 Launching the cleaning cycle



- Press



Tip to improve cleaning performance

At the start of the bathing season, launch several cleaning cycles in floor only mode (after removing the large debris with a net).

Regular use of the cleaner (without exceeding 3 cycles per week) means that your pool will always be clean and the filter less clogged.


2.4.3 Adjusting the cleaning time (depending on model)

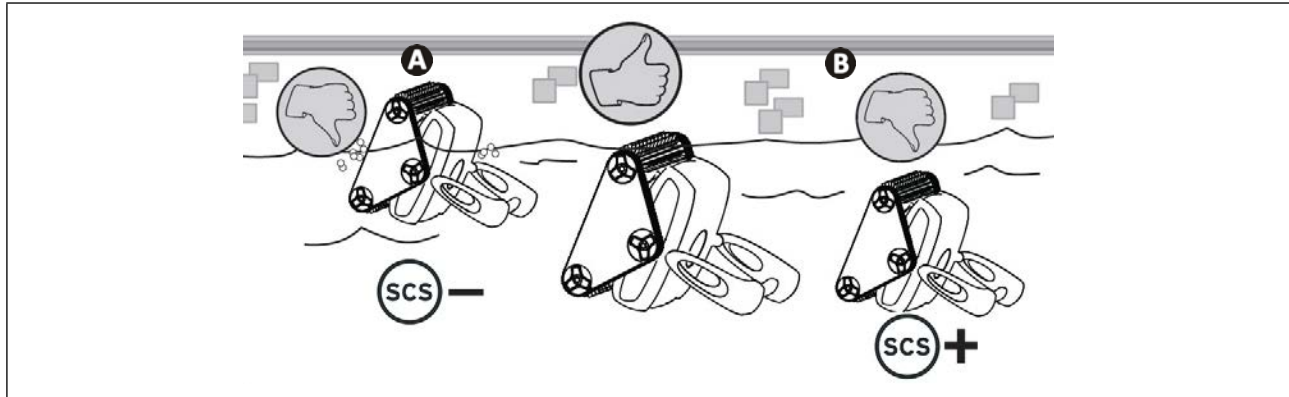
- You may reduce or increase the cleaning time at any time (+/- 0.5 H).


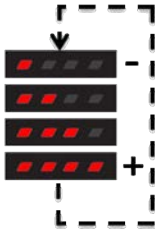
- Press the button:



2.4.4 Surface control

- Check that the cleaner filter is clean so as not to affect the cleaner's behaviour.
- Once the cleaning cycle has been launched, monitor the cleaner's behaviour when climbing the walls and when it brushes the waterline.
- You can use the **(SCS)** (Surface Control System) button at any time depending on the cleaner's behaviour: **refer to the table below.**
- The new configuration will be effective the next time the cleaner climbs the walls.
- 2 LEDs are lit by default  .



	Cleaner behaviour to be observed	Action
A	The cleaner quickly climbs the walls and goes past the waterline, aspirating air: Reduce the number of LEDs.	Press: 
B	The cleaner slowly climbs the walls and stops below the waterline: Increase the number of LEDs.	

Tip: Optimise wall cleaning and water line brushing operations




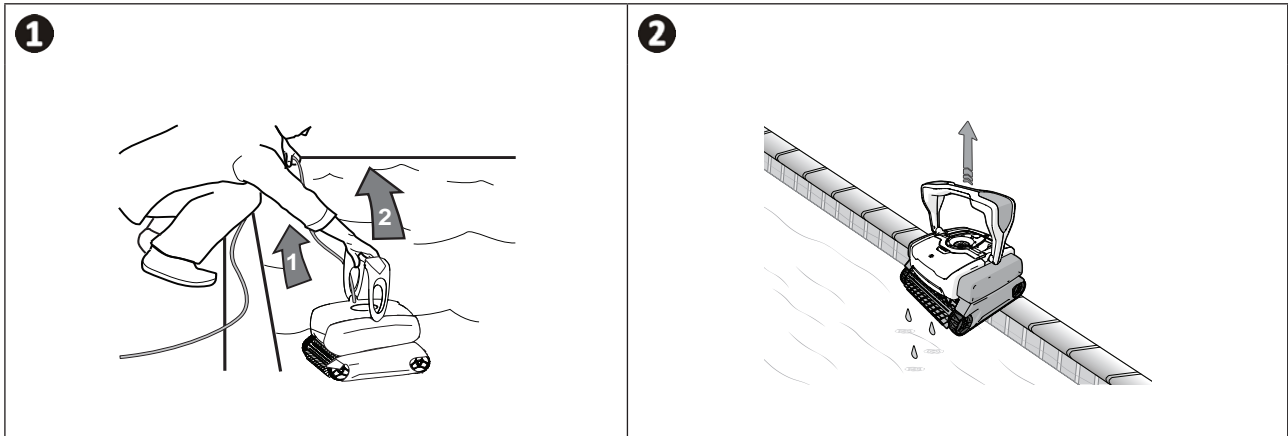
According to the type of pool lining, the cleaner will behave differently when climbing the walls. The cleaner has the **(SCS)** function to optimise **wall cleaning, then waterline brushing** on all types of lining. However the **(SCS)** function is set, the suction power remains at its maximum at all times when the cleaner is moving across the floor of the pool.

➤ 2.5 I Removing the cleaner from the water



- To prevent damaging the equipment, use only the handle to remove the appliance from the pool.

- Switch off the appliance by pressing .
- Bring the cleaner to the edge of the pool by gently pulling on the floating cable.
- When the cleaner is within arm's reach, pick it up by the handle and lift it gently out of the pool so that the water it contains drains into the pool (see figure **1** and **2**).



➤ 2.6 I Good practices after each cleaning operation

2.6.1 Clean the filter as soon as the appliance is out of the pool



- The cleaner's performance may be reduced if the filter is full or dirty.
- Clean the filter in clean water as soon as the appliance is removed from the pool after each cleaning cycle. Do not wait for the debris to dry.

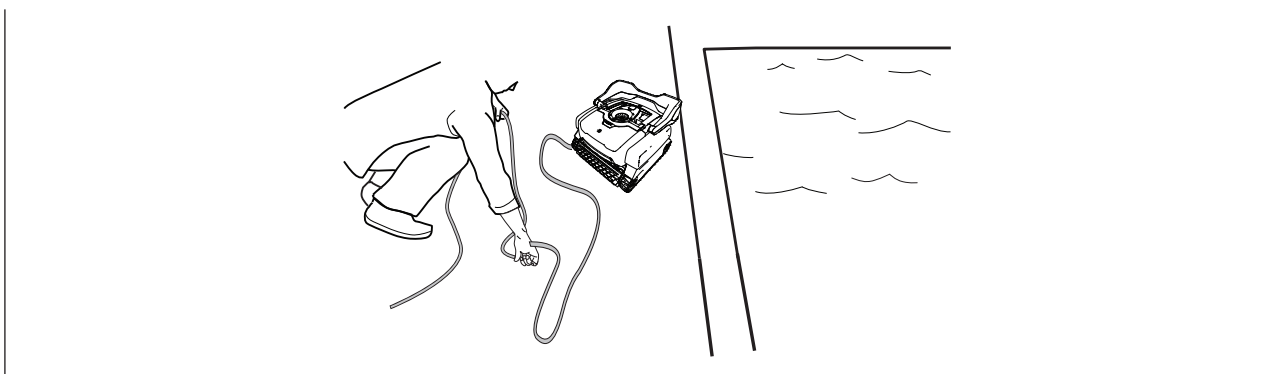
- After each cleaning cycle, follow the steps for cleaning the filter, see “3.2 I Cleaning the filter as soon as the appliance is out of the pool”.

EN

2.6.2 Lay out the cable to reduce tangling

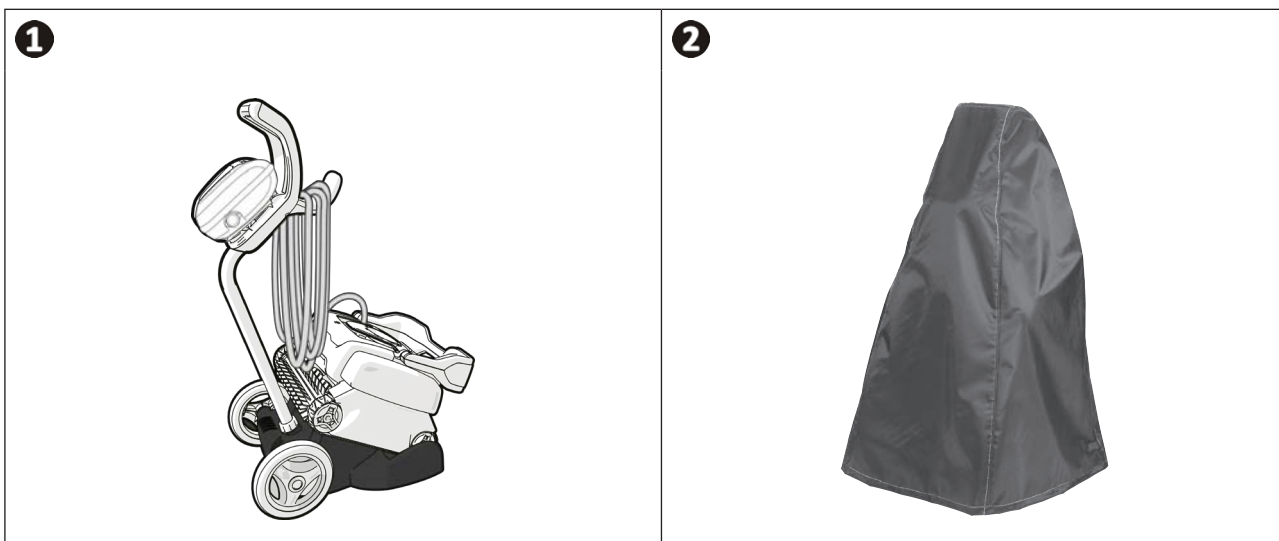
The cleaner's behaviour is strongly impacted by the tangling of the cable. A cable that is correctly untangled will guarantee better coverage of the pool.

- Untangle the cable and lay it out in the sun so that it returns to its original shape.



2.6.3 Store the cleaner and cable

- Place the cleaner vertically at the location provided on the trolley (depending on the model) for it to dry out quickly. Roll up the cable carefully and place it on the trolley handle (see figure 1).
- Store all elements away from direct sunlight, humidity, bad weather, and out of reach of any splashes. A protective cover is available as an optional extra (see figure 2).



Tip:

Even if you do not own a trolley, the cable must still be carefully arranged for storage. Once rolled up, the cable can be placed on a wall mount for example.



3 Maintenance



To avoid serious injury:

- Disconnect the cleaner from the power supply.

3.1 | Cleaning the cleaner

- The appliance must be cleaned regularly using clean or slightly soapy water. Do not use solvents.
- Rinse the appliance thoroughly with clean water.
- Do not let your appliance dry in the sun by the pool.

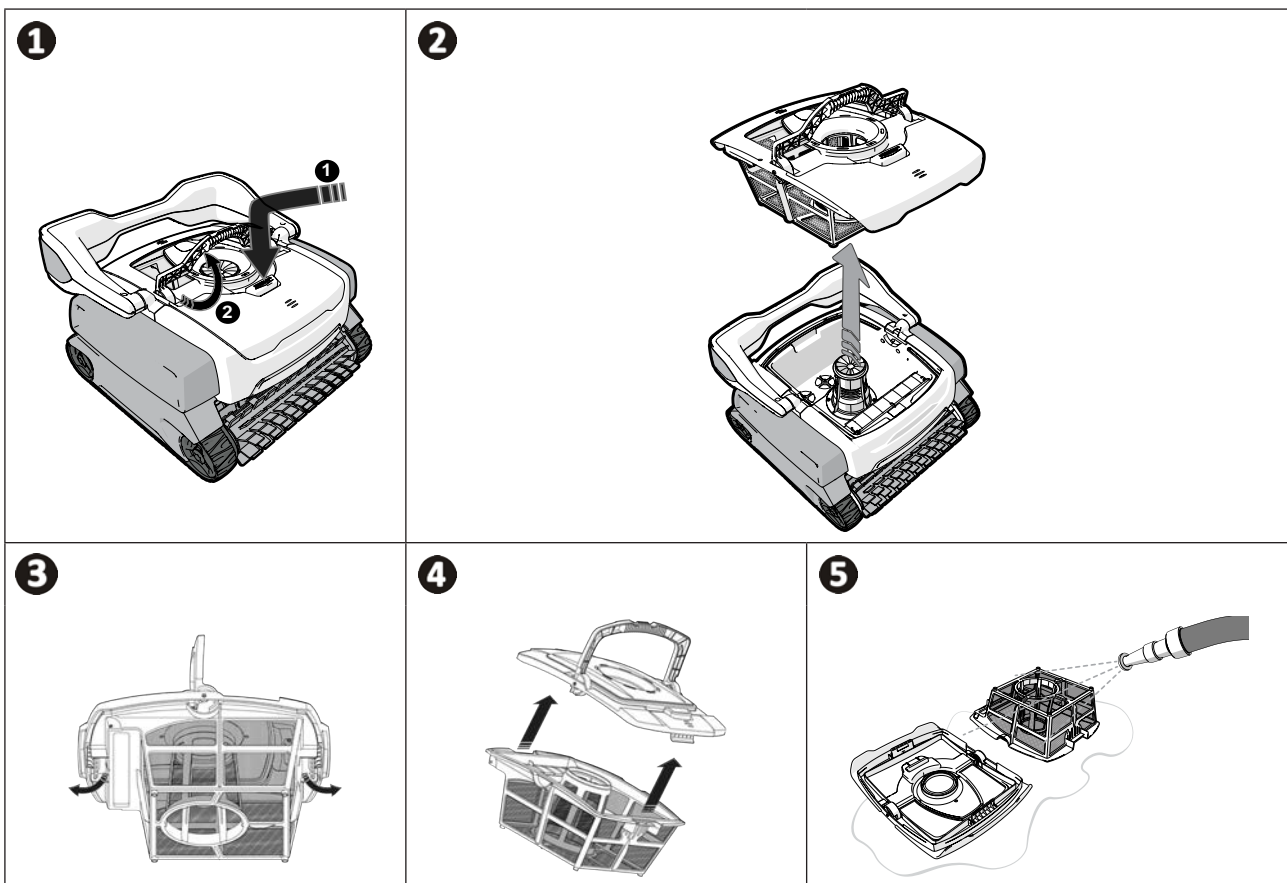


Tip: To preserve the integrity of the cleaner and guarantee optimum performance:

- The filter and brushes should be replaced every 2 years,
- Examine the wear indicator on the tracks and replace the tracks as soon as the indicator is reached.

3.2 | Cleaning the filter as soon as the appliance is out of the pool

- If the filter is clogged, clean it with an acidic solution (spirit vinegar, for example). It is recommended that you do this at least once a year, since the filter will clog if not used for several months (winterising period).



➤ 3.3 I Cleaning the impeller

To avoid serious injury:

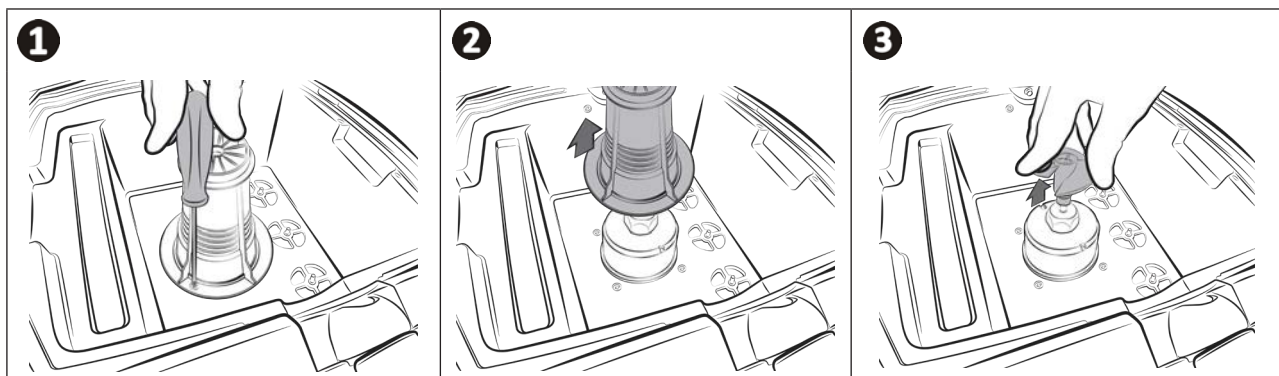


- Disconnect the cleaner from the power supply.

- Wear gloves when handling the impeller .

- Loosen the screw on the grid (see figure **1**).
- Remove the grid carefully (see figure **2**).
- Wear gloves and pull on the impeller while holding it tightly (see figure **3**). Remove all debris (leaves, stones, etc.) which may be blocking the impeller.

EN



➤ 3.4 I Replacing the tracks



- The tracks must be replaced by the retailer.

➤ 3.5 I Replacing the brushes

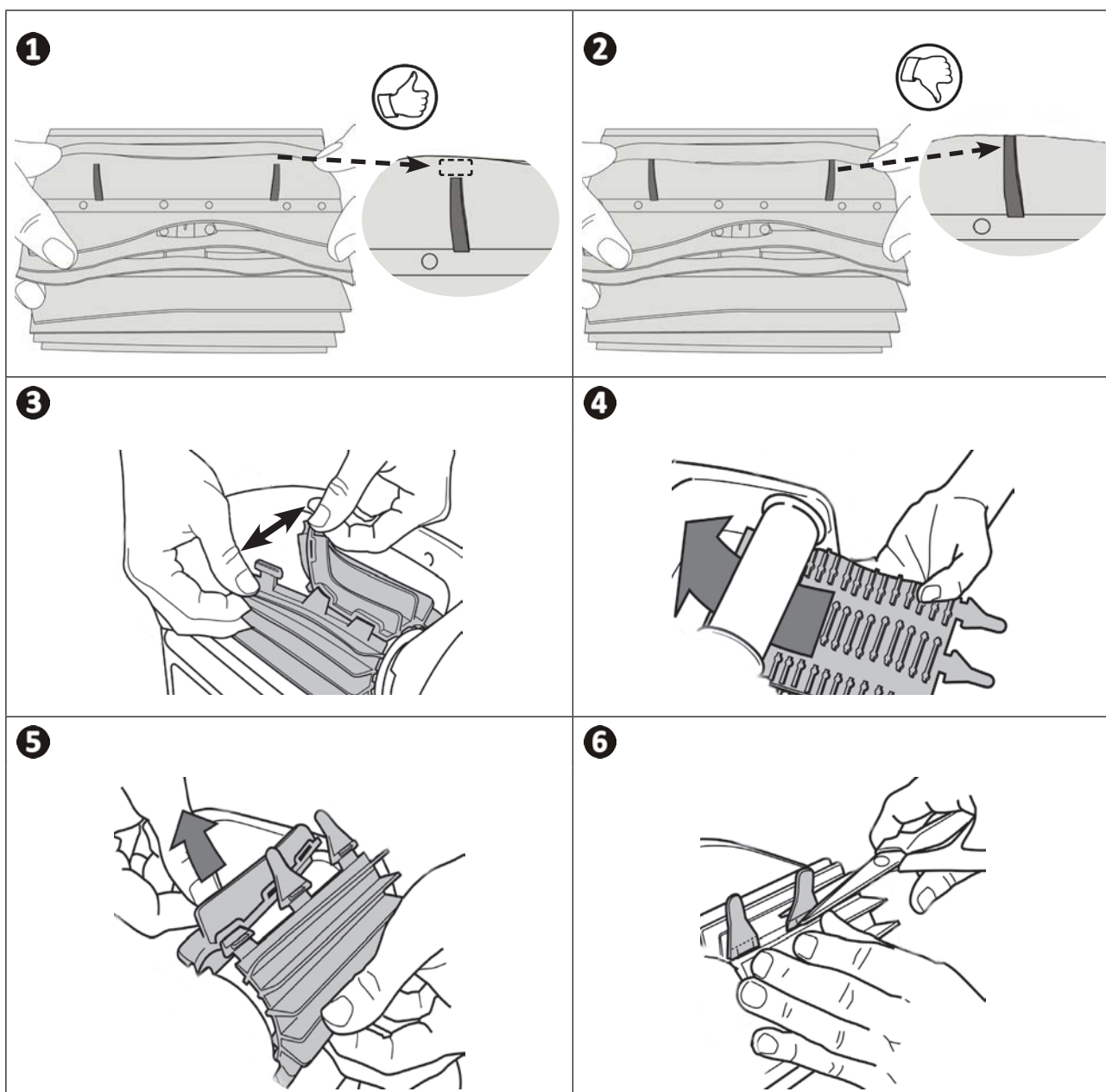
3.5.1 PVA brushes: Polyester, tiled, enamel pools (depending on the model)



- The PVA brushes must be replaced by the retailer.

3.5.2 Flap brushes (depending on the model)


- Each brush is equipped with wear indicators; the distance between the indicators and the end of the brush indicates whether the brush is in good condition (see figure 1).
- The brushes are worn and should be replaced when the wear indicators appear as shown in figure 2.
- To remove worn brushes, remove the tabs from the holes in which they are fixed (see figure 3).
- To fit new brushes, start by fitting the side without tabs under the brush holder (see figure 4).
- Roll the brush around its support, slide the tabs into the attachment holes and pull on the end of each tab until its edge passes through the slit (see figure 5).
- Cut the tabs using a pair of scissors for them to be level with the other blades (see figure 6).









4 Troubleshooting




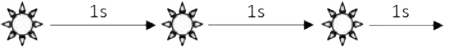




- Before you contact the retailer, please carry out these few simple checks using the following tables if a problem occurs.
- If the problem continues contact your retailer.
-  : Actions to be performed by a qualified technician only

EN

4.1 I Appliance behaviour

<p>While operating, the cleaner does not stay firmly on the pool floor</p>	<p>This may have any of 3 causes:</p> <ul style="list-style-type: none"> • There is still air in the appliance's casing. Repeat the cleaner immersion operations (see § "2.1 I Immersing the cleaner"). • The filter is full or dirty: simply clean it. • The impeller is damaged, contact the retailer: 
<p>The cleaner does not or no longer climbs the pool walls</p>	<p>This may have any of 2 causes:</p> <ul style="list-style-type: none"> • The filter is full or dirty: simply clean it. • Even though the water seems clear, microscopic algae are present in your pool, they are not visible to the naked eye, and they make the walls slippery and prevent the cleaner from climbing. Carry out shock chlorination and slightly reduce the pH. Do not leave the cleaner in the water during shock treatment. <p>• The brushes are worn: check the wear indicators "3.5 I Replacing the brushes", then turn the brushes to check the rotations. Replace the brushes where necessary.</p> <p>If the problem continues contact the retailer: </p>
<p>The cleaner does not move on start-up.</p>	<ul style="list-style-type: none"> • Check that the outlet to which the control box is connected is receiving a power supply. <p>Check that a cleaning cycle has been launched and that the lights are on.</p> <p>If the problem continues contact the retailer: </p>
<p>The cable gets tangled</p>	<ul style="list-style-type: none"> • Do not unroll the entire length of the cable into the pool. • Place the required length of cable in the pool and place the rest along the side of the pool.
<p>The cleaner's discharge nozzles or bottom plug holes become blocked</p>	<ul style="list-style-type: none"> • Stop the filter pump and begin a new cleaning cycle. • Place the control box halfway along the length of the pool, in accordance with the safety conditions, see "2.3 I Electricity supply connection". If cleaning is not optimal, vary the location of the control box and the place at which the cleaner enters the pool.
<p>The cleaner climbs the walls slowly and stops under the waterline</p> <p>The cleaner climbs the walls quickly and goes past the waterline, aspirating air</p>	<ul style="list-style-type: none"> • The cleaner may behave differently depending on the lining of the pool. A parameter may require changing to optimise the cleaner's behaviour when climbing the wall, see "2.5.4 Surface control". <p>If the problem continues contact the retailer: </p>
<p>The control box does not respond to any button presses.</p>	<ul style="list-style-type: none"> • Unplug the power cord from the mains socket, wait 10 seconds and plug it back in again.

4.2 I User alerts

Flashing LED: 	Solutions
	<ul style="list-style-type: none"> • Check that the cleaner is correctly connected to the control box. If necessary, unplug it and reconnect it following the appropriate procedure.
	<ul style="list-style-type: none"> • Rotate the brushes to check that nothing is preventing them from turning correctly (sand, cable, etc.). • The tracks are not turning correctly: Contact the retailer .
	<ul style="list-style-type: none"> • Cleaner operating outside the pool. Make sure you start the cleaner when it is in the water (see § “2.1 I Immersing the cleaner”).
	<ul style="list-style-type: none"> • Check that there are no stones or hair in the impeller. • Clean or change the filter if necessary.

If the problem continues contact the retailer: 



Recycling

This symbol is required by the European directive DEEE 2012/19/EU (directive on waste electrical and electronic equipment) and means that your appliance must not be thrown into a normal bin. It will be selectively collected for the purpose of reuse, recycling or transformation. If it contains any substances that may be harmful to the environment, these will be eliminated or neutralised. Contact your retailer for recycling information.



Votre revendeur
Your retailer

Modèle appareil
Appliance model

Numéro de série
Serial number

Pour plus d'informations, enregistrement produit et support client :
For more information, product registration and customer support:

www.polarispool.eu

